

Attendance Rates Effecting Graduation Rates

Antoine Washington

Summary

- Introduce dataset
- Explain method
- Data (graphs)
- Data results
- Conclusion

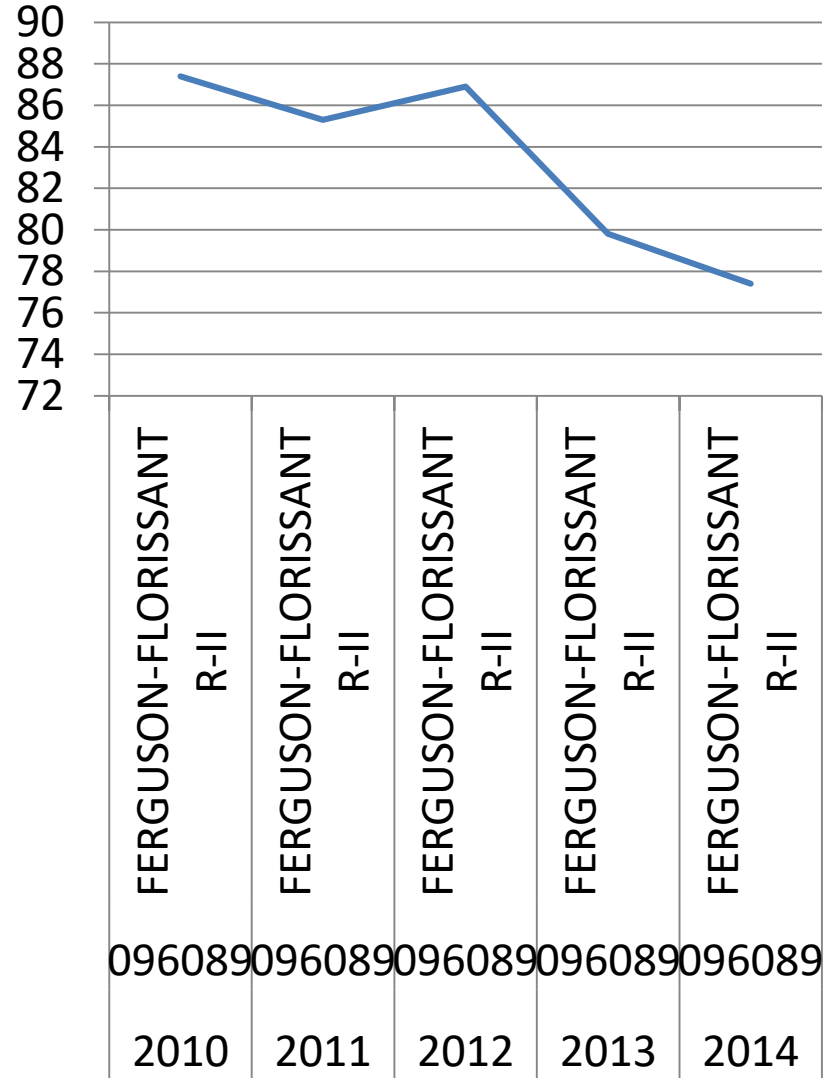
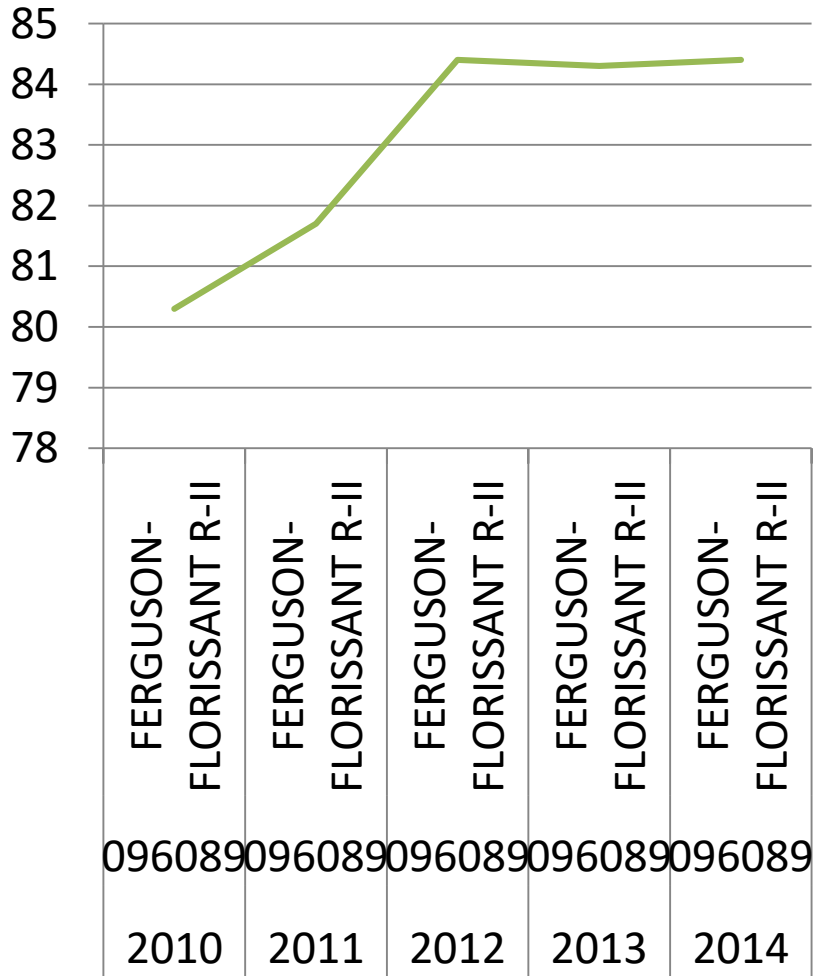
Data Set Description

- Data from Missouri Comprehensive Data System.
- Saint Louis district attendance and graduation rates.
- 5 year span (2010-2014)

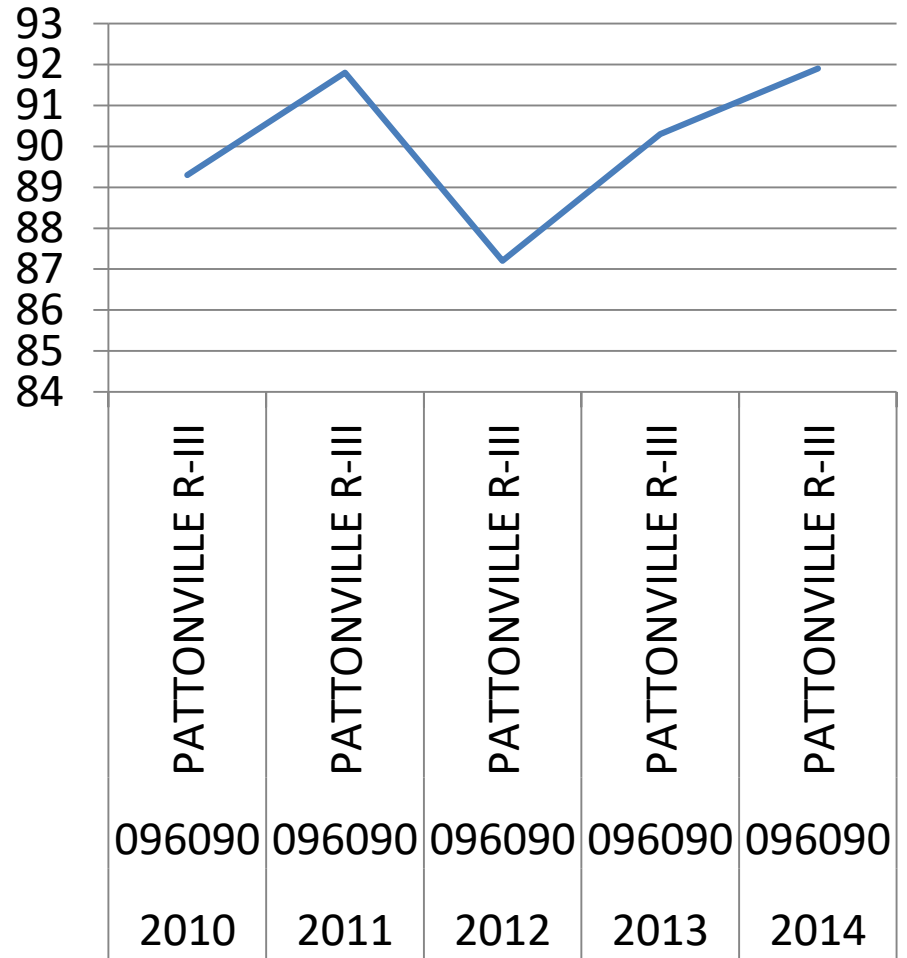
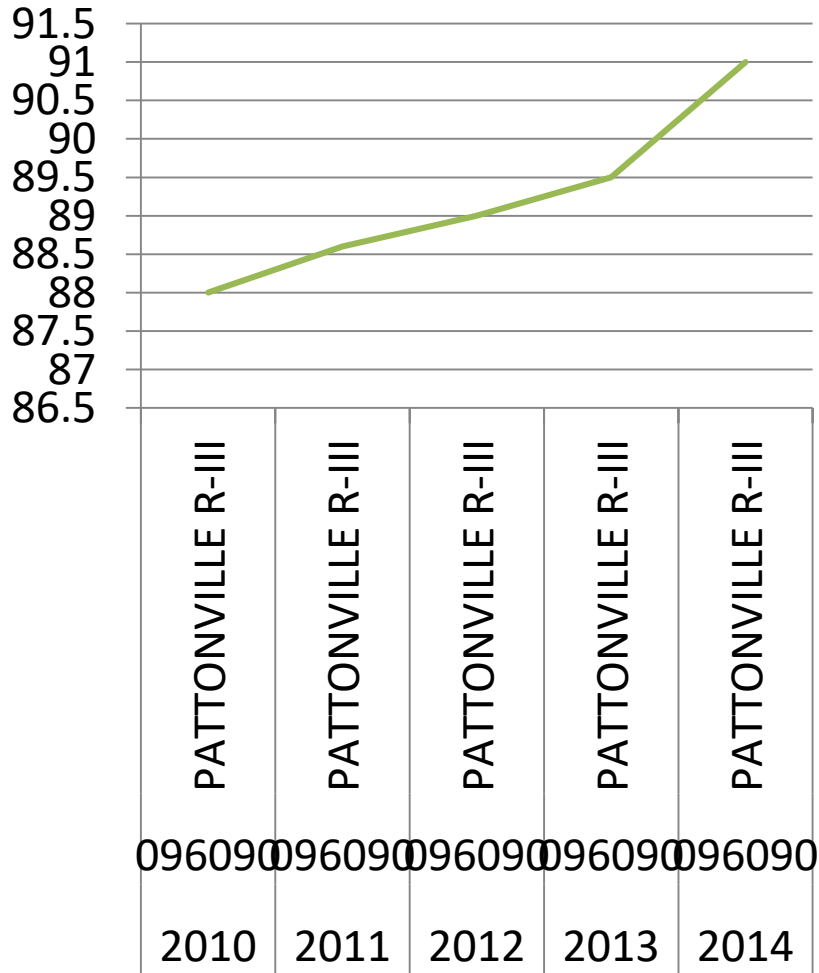
Methodology

- Creation of line graphs
- Compute the rates averages over the five year span.
- Test the average values relation/correlation.
- Determine solution.

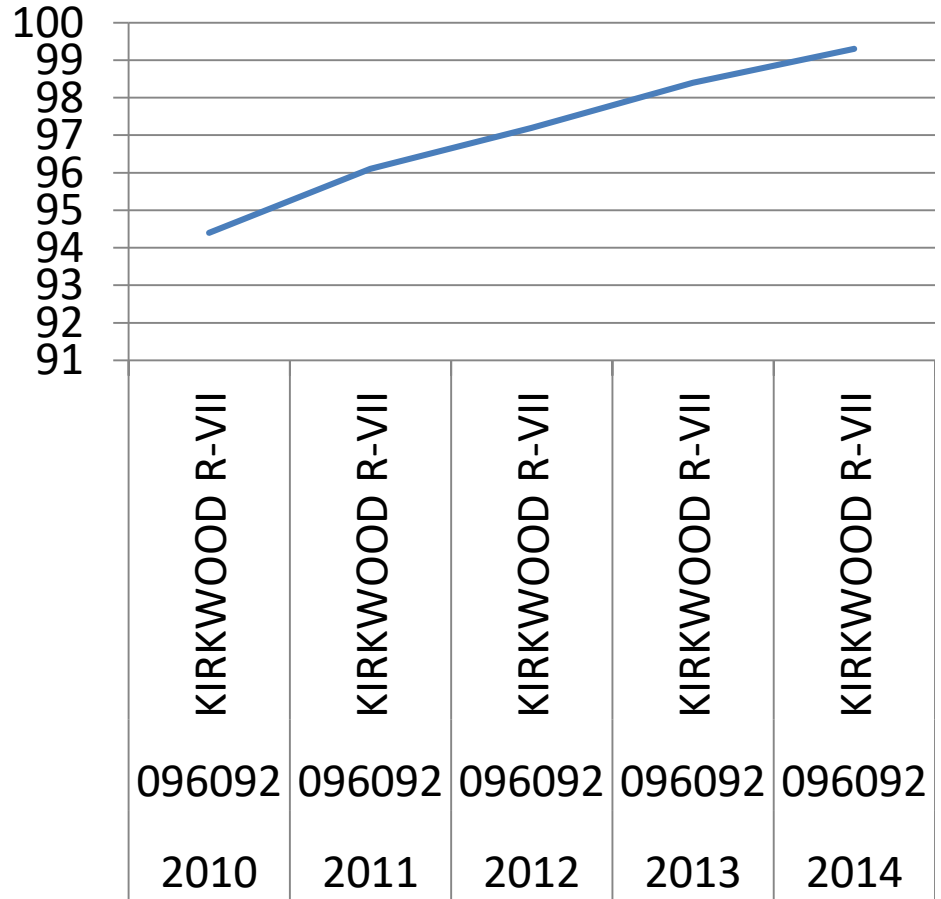
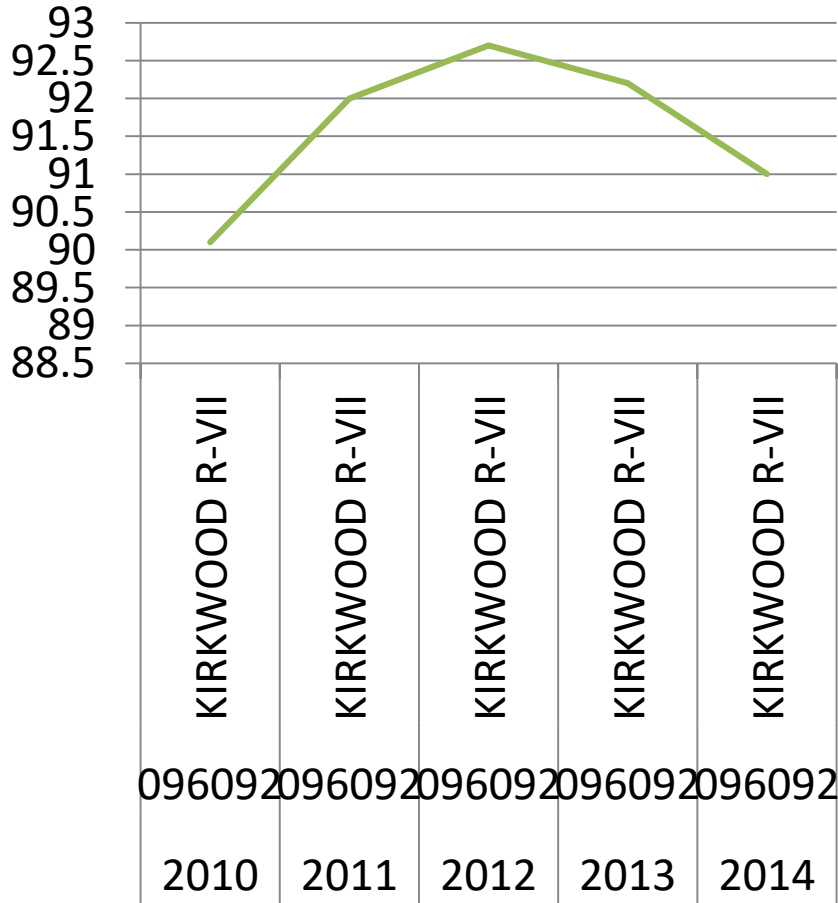
Attendance vs. Graduation



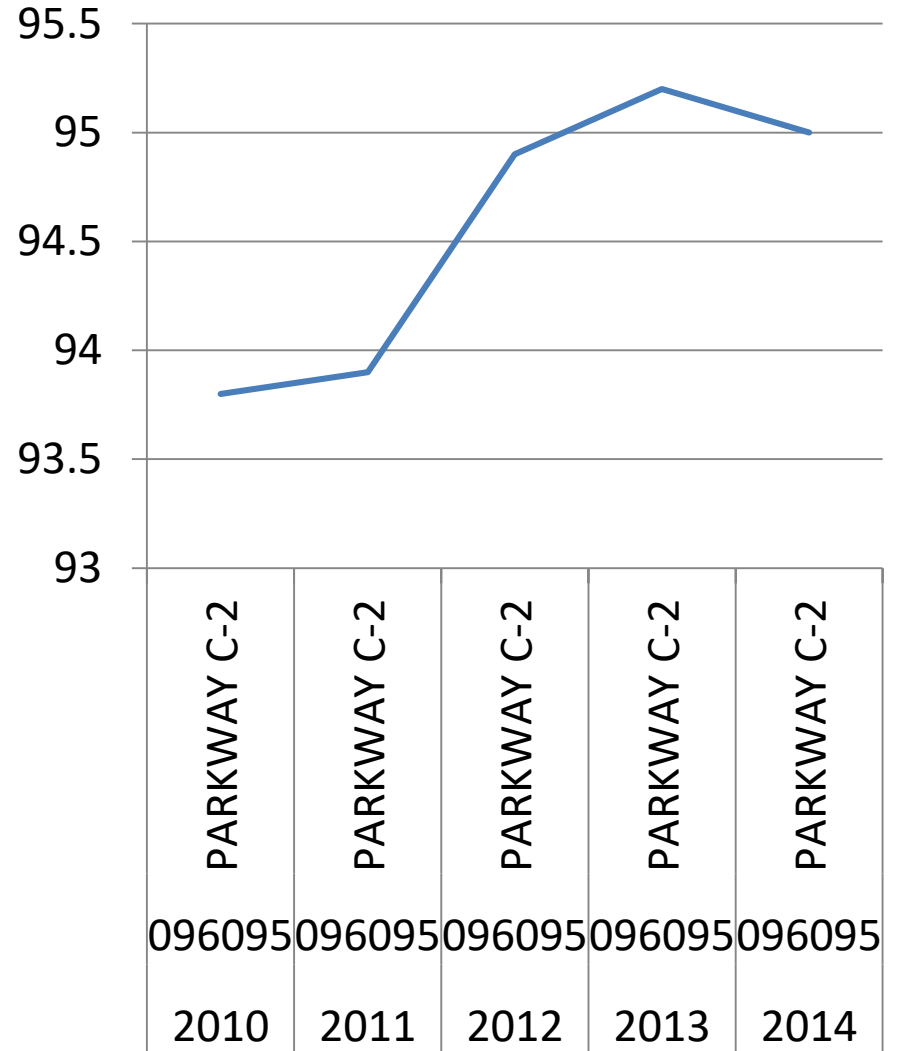
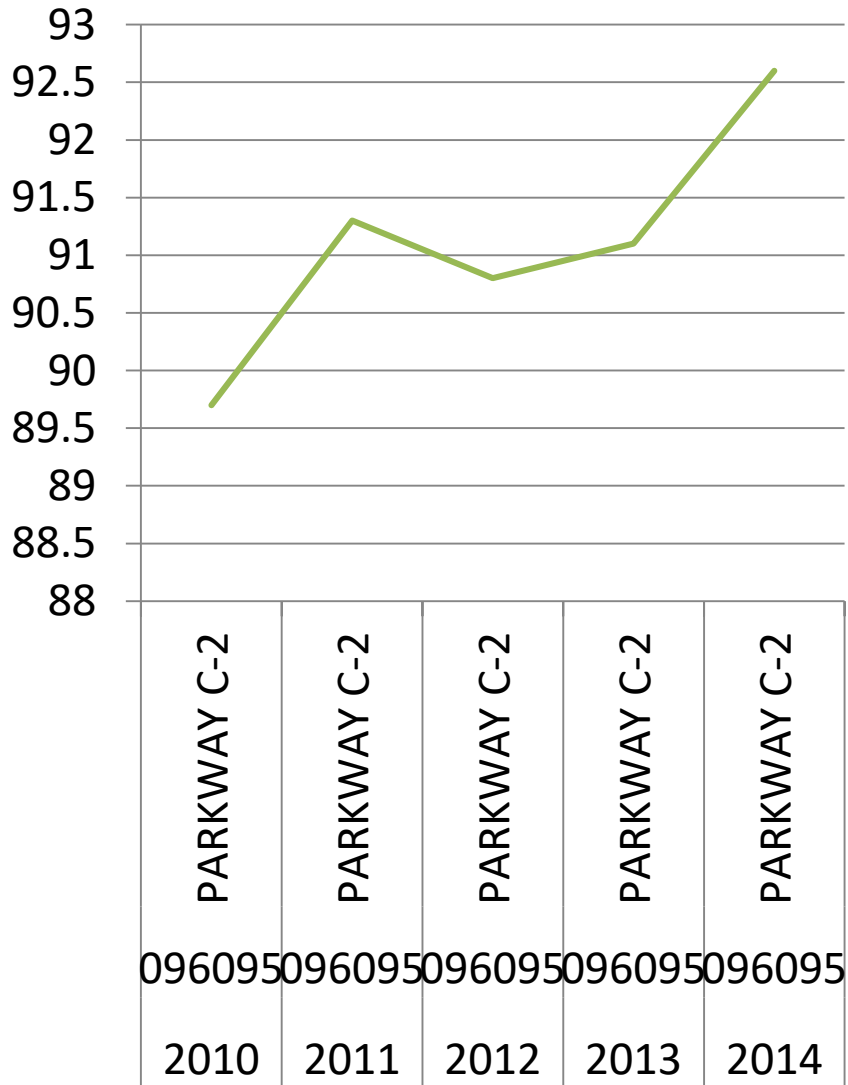
Attendance vs. Graduation



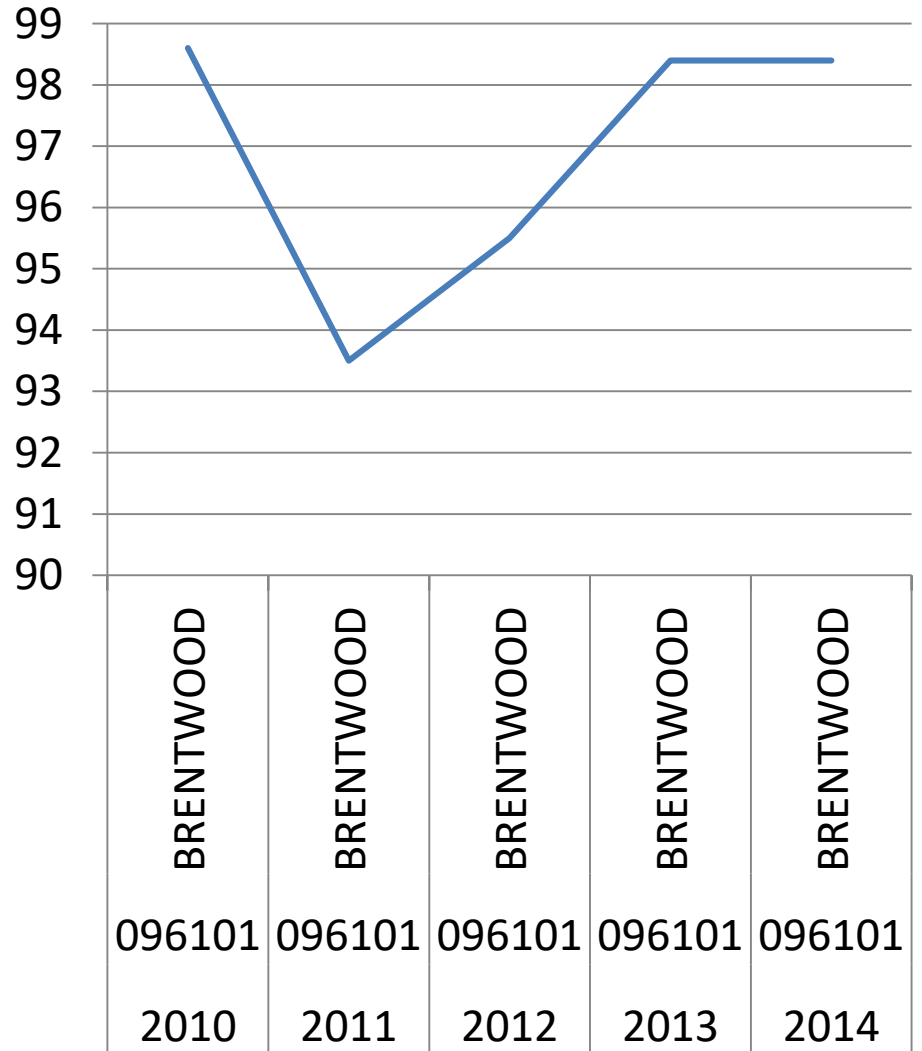
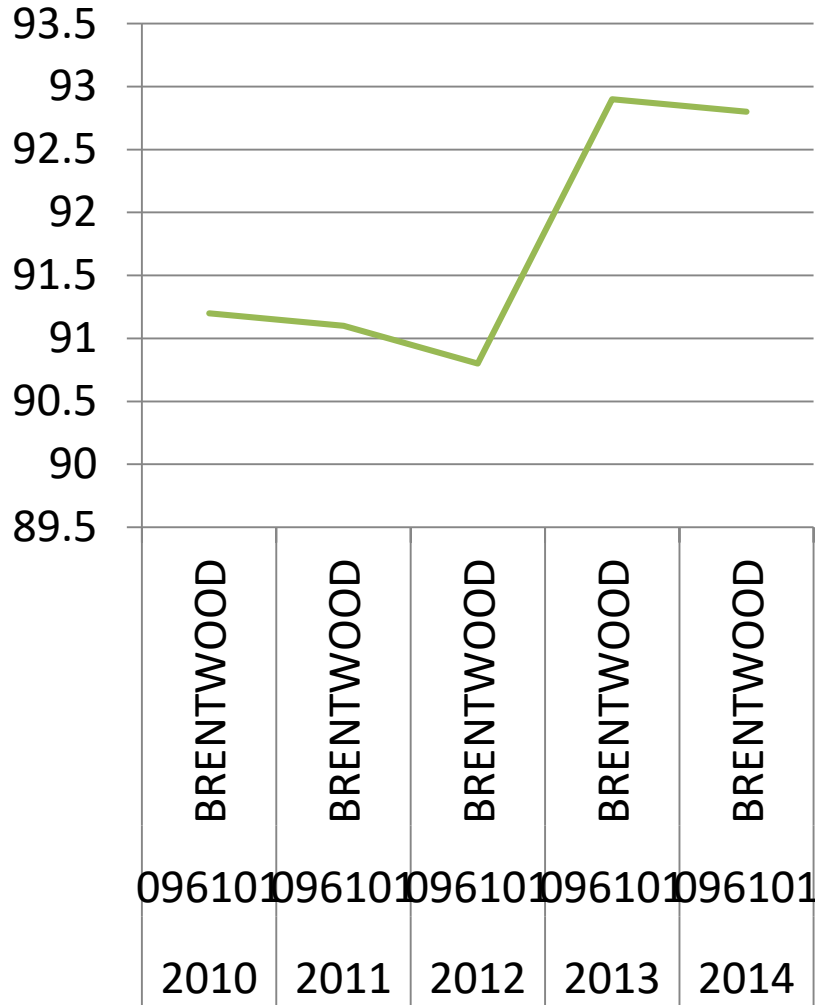
Attendance vs. Graduation



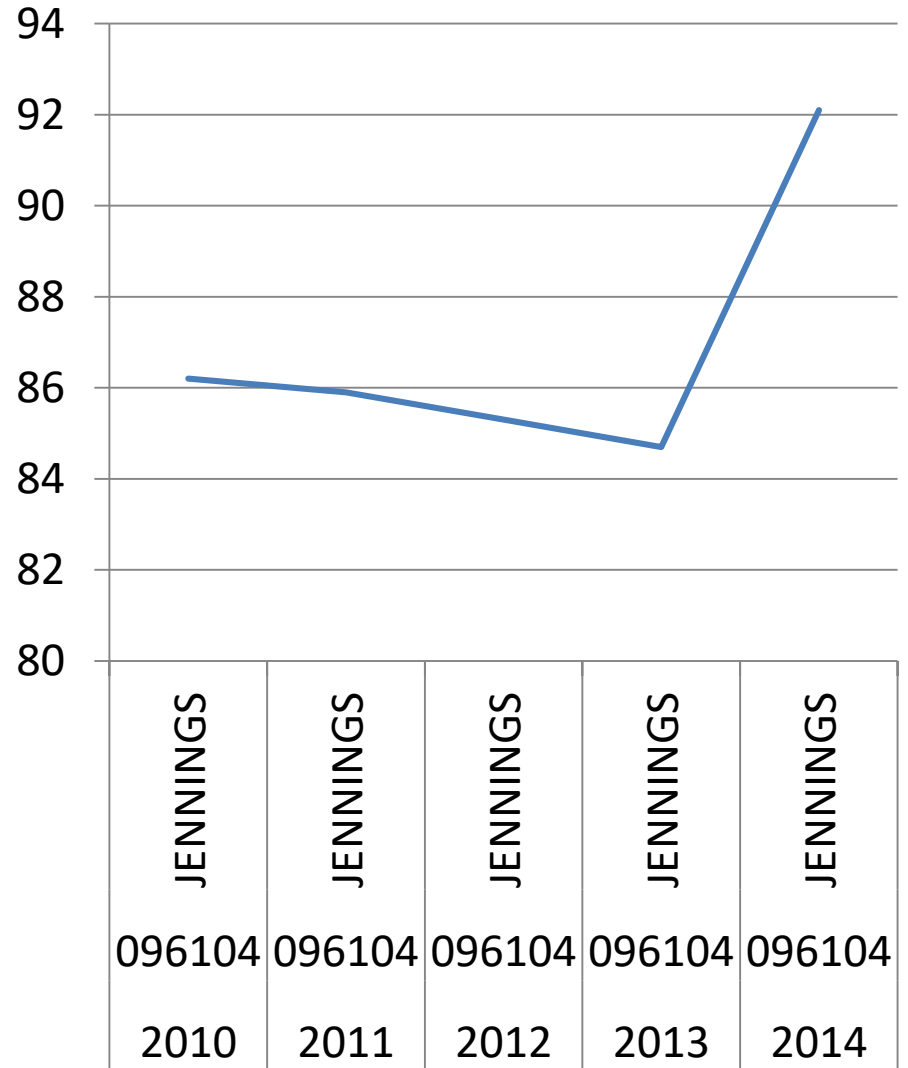
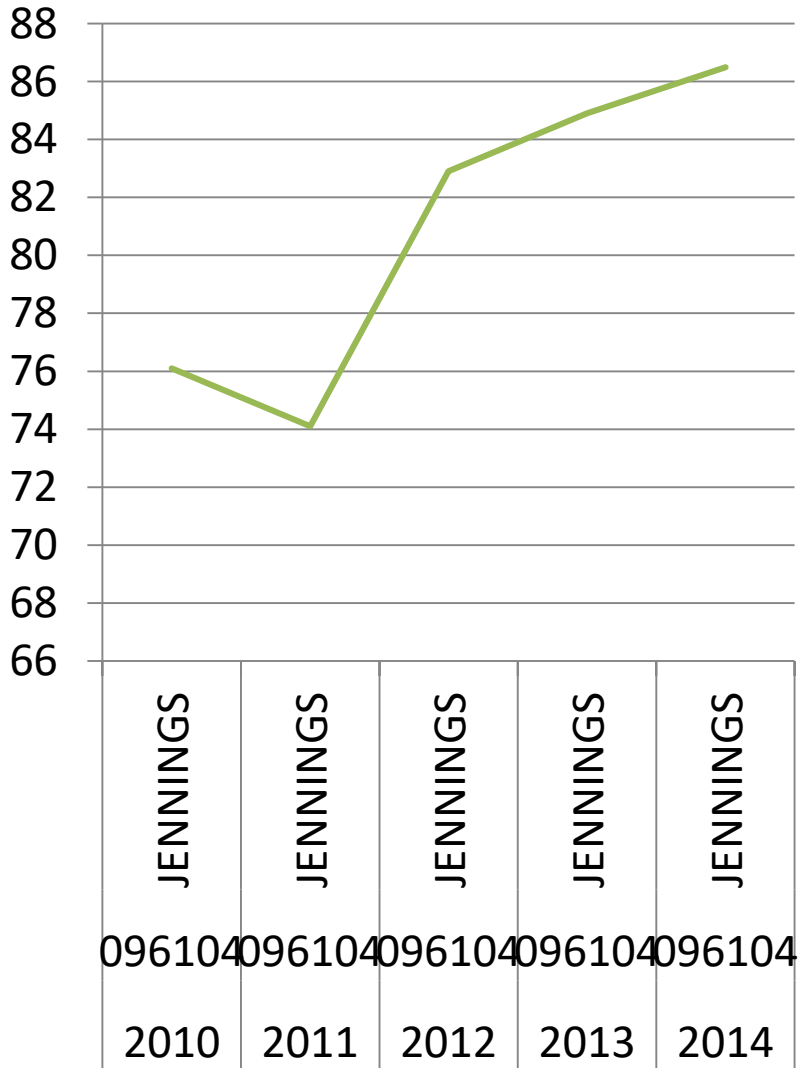
Attendance vs. Graduation



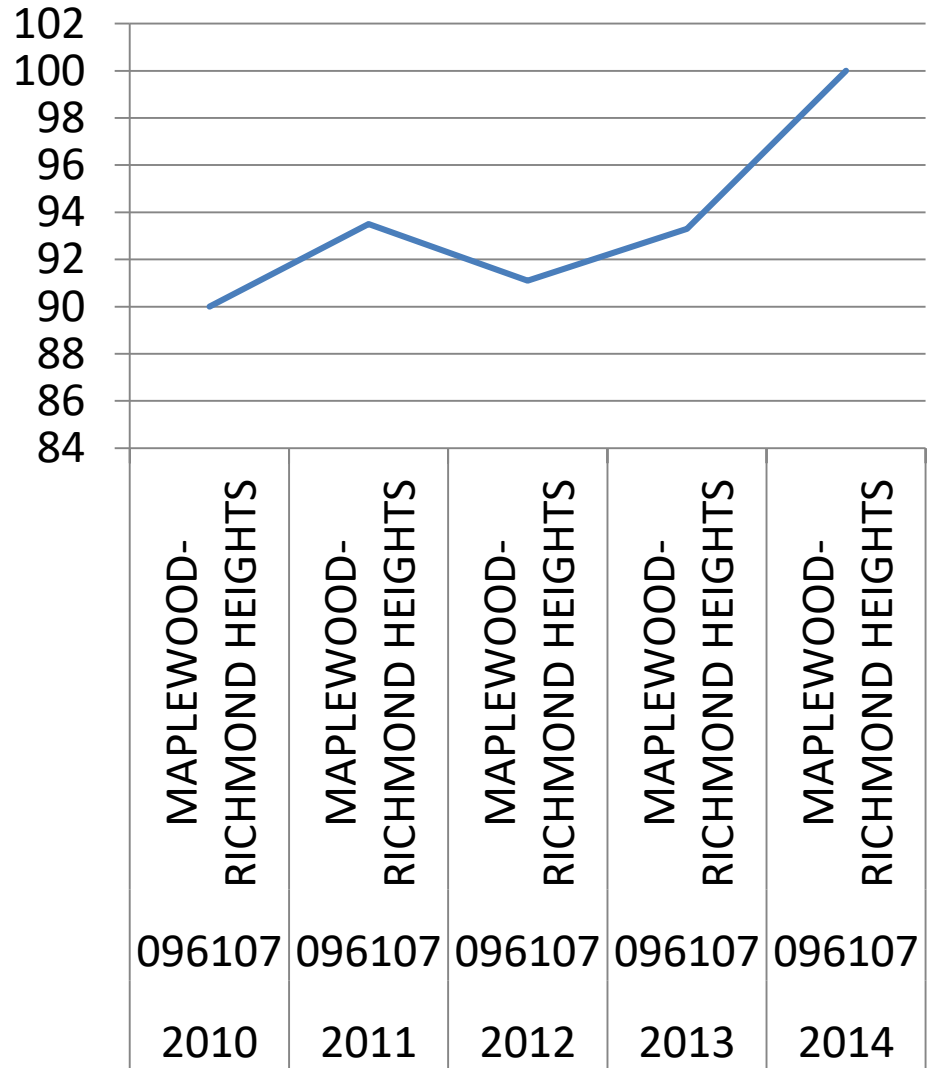
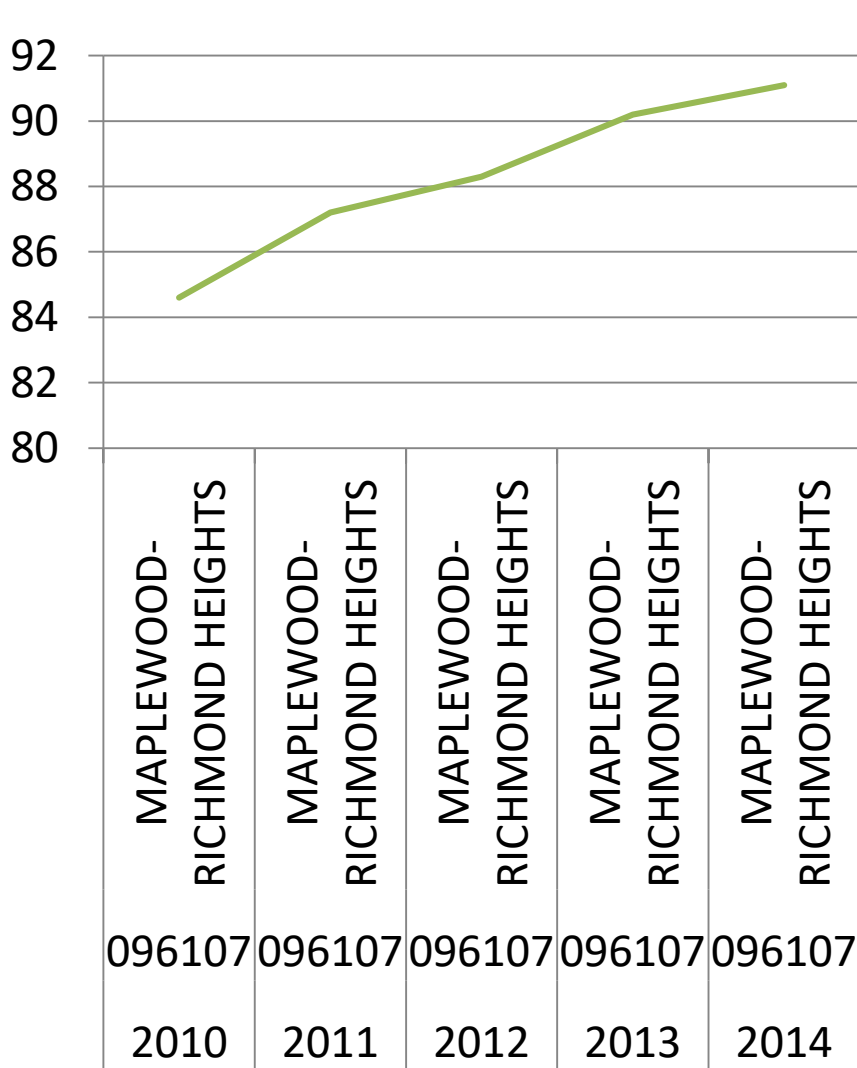
Attendance vs. Graduation



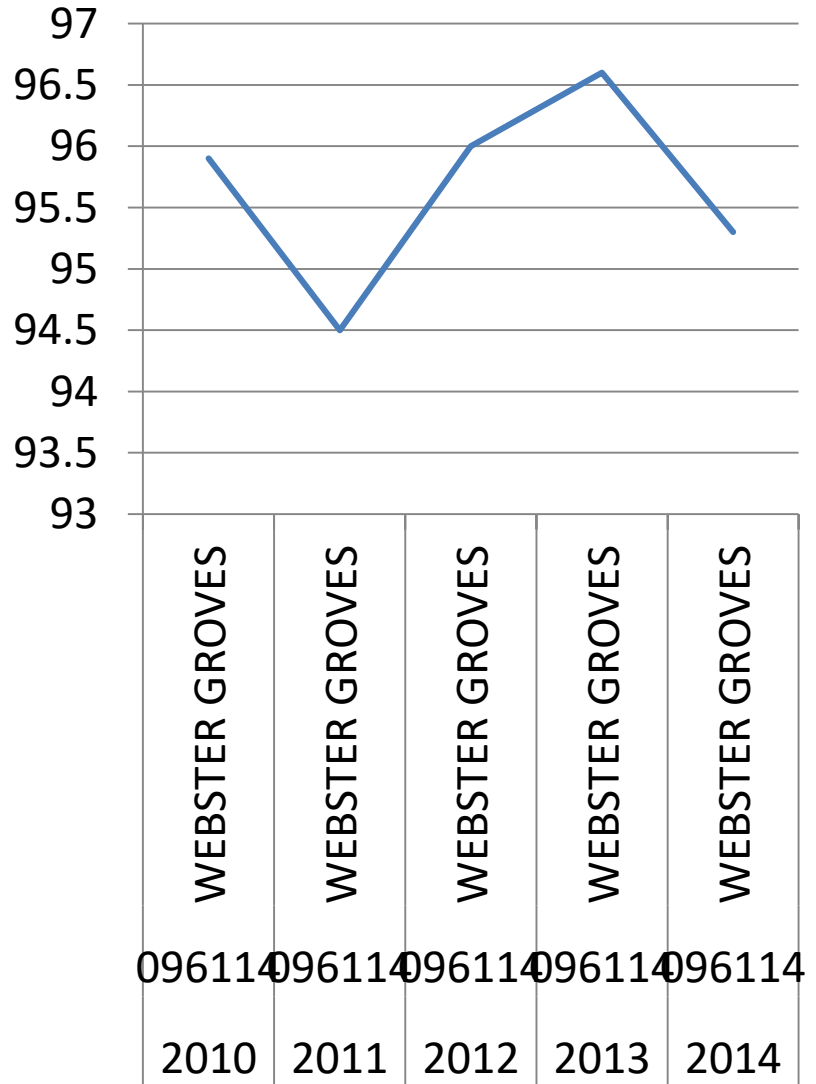
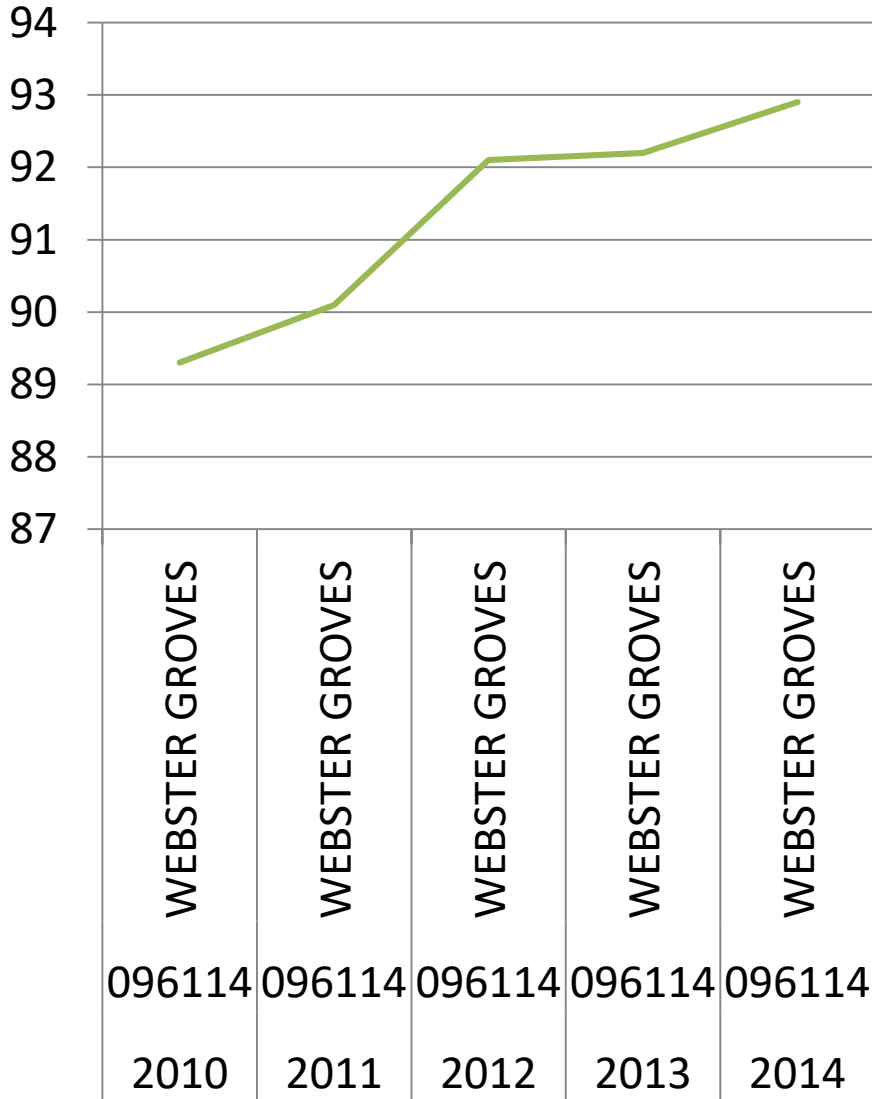
Attendance vs. Graduation



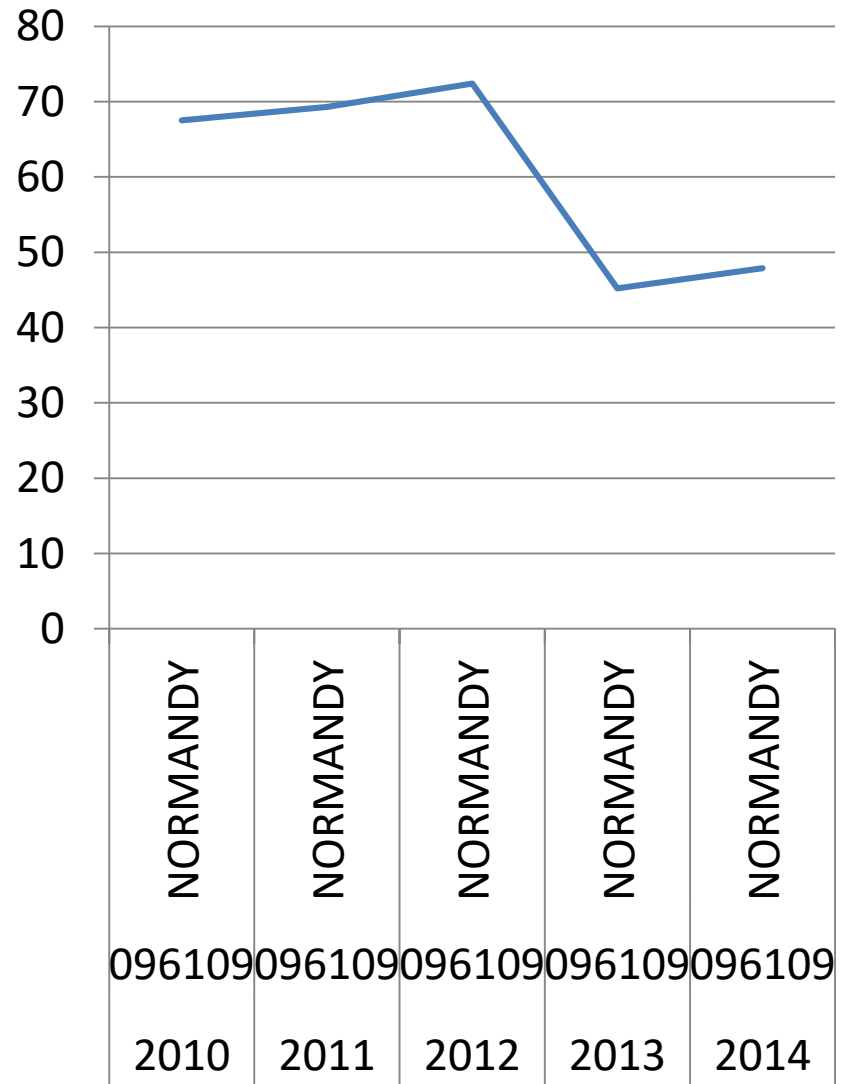
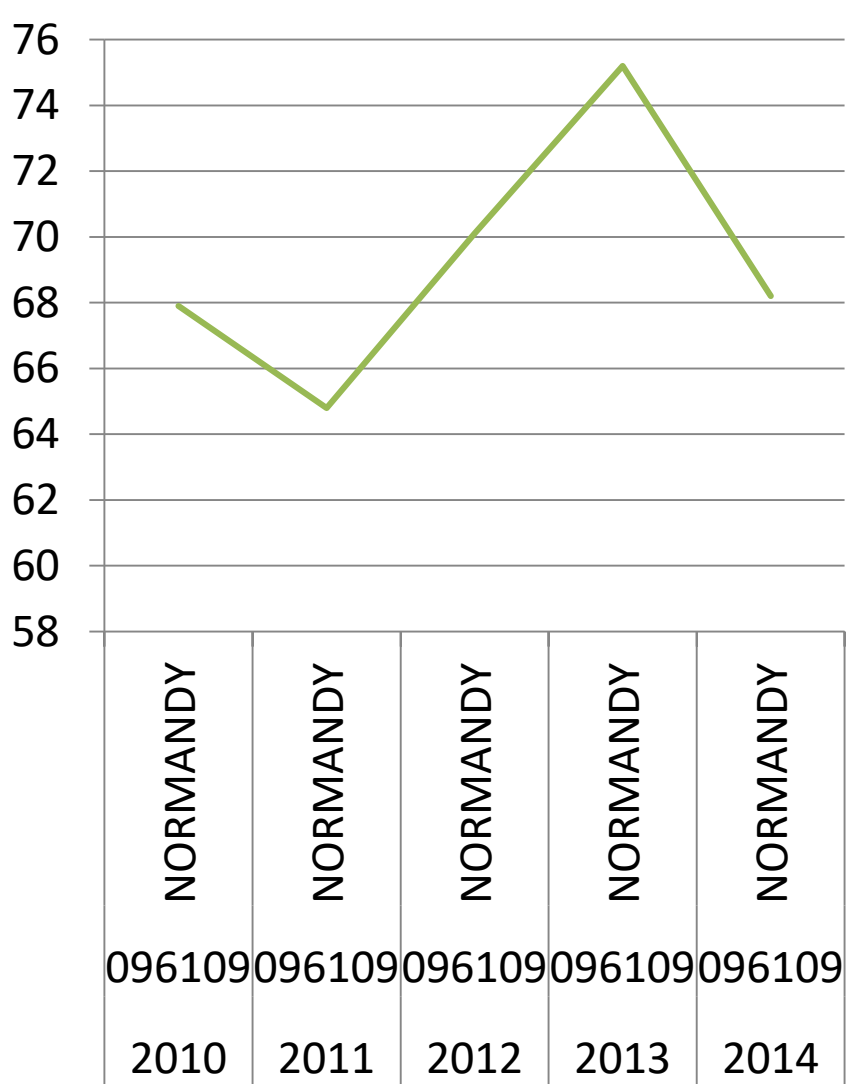
Attendance vs. Graduation



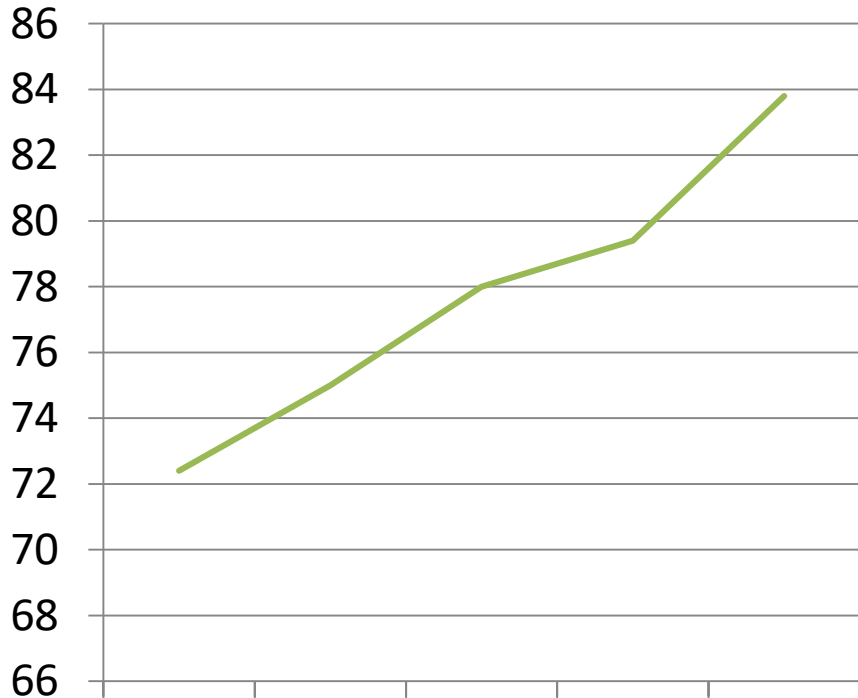
Attendance vs. Graduation



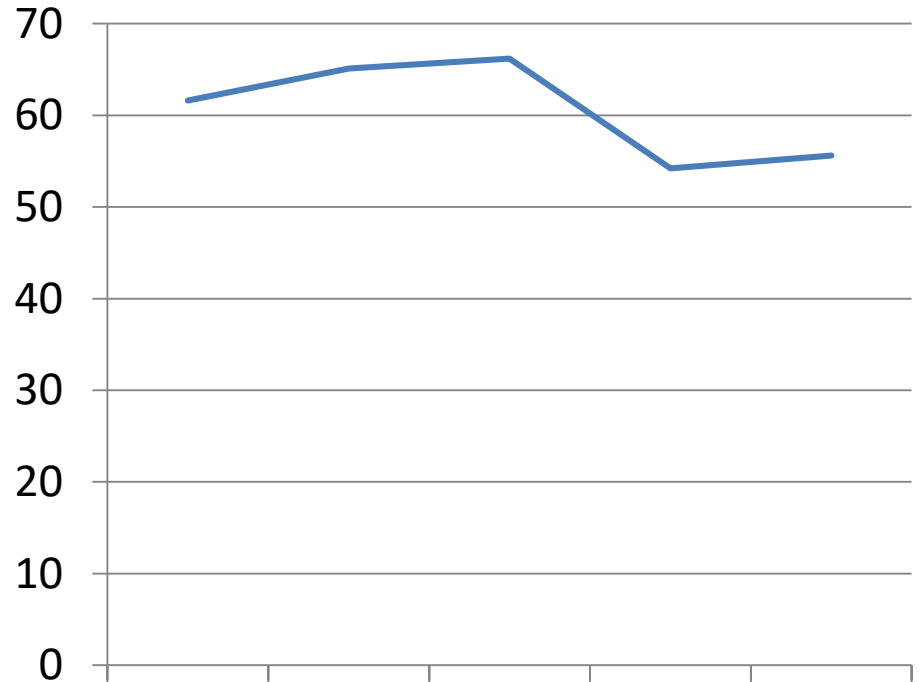
Attendance vs. Graduation



Attendance vs. Graduation



ST. LOUIS CITY	ST. LOUIS CITY	ST. LOUIS CITY	ST. LOUIS CITY	ST. LOUIS CITY
115115	115115	115115	115115	115115
2010	2011	2012	2013	2014



ST. LOUIS CITY	ST. LOUIS CITY	ST. LOUIS CITY	ST. LOUIS CITY	ST. LOUIS CITY
115115	115115	115115	115115	115115
2010	2011	2012	2013	2014

Average Attendance Rates

- Ferguson-Florissant 83.02%
- Pattonville 89.22%
- Kirkwood 91.6%
- Parkway 91.1%
- Brentwood 91.76%

Average Graduation Rates

- Ferguson-Florissant 83.36%
- Pattonville 90.1%
- Kirkwood 97.08%
- Parkway 94.56%
- Brentwood 96.88%

Average Attendance Rates

- Jennings 80.6%
- Maplewood-Richmond Heights 88.28%
- Normandy 69.24%
- Webster Groves 91.32%
- Saint Louis City 77.72%

Average Graduation Rates

- Jennings 86.84%
- Maplewood-Richmond Heights 93.58%
- Normandy 60.46%
- Webster Groves 95.66%
- Saint Louis City 60.54%

Results

- No significant correlation between attendance and graduation rate.

Summary

- Introduce dataset
- Explain method
- Data Graphs
- Data Results
- Conclusion

Questions Comments?