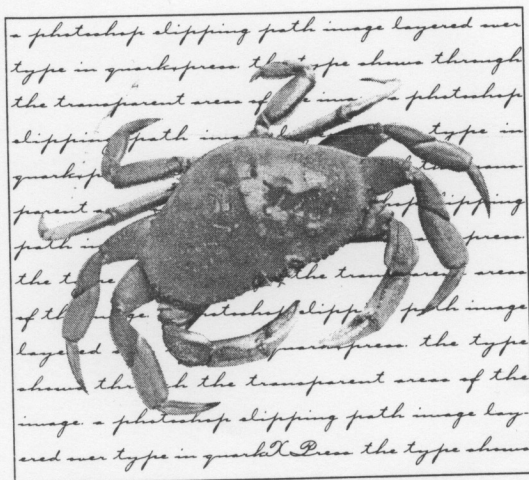


2 Type wrapping around a Photoshop clipping path in QuarkXPress.



3 A Photoshop clipping path layered over type in QuarkXPress.

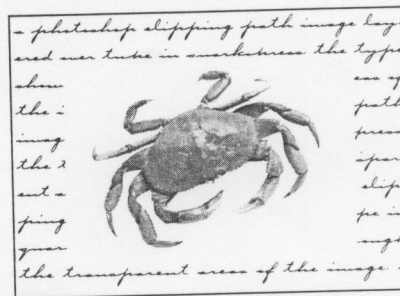
You can silhouette an image in Photoshop for use in another application, such as Adobe Illustrator or QuarkXPress. The area outside the image will be transparent, so it can be layered over other page elements.

Note: In QuarkXPress 4 or later, you can create an editable clipping path or create a clipping path based on an embedded Photoshop path.

To clip the background from an image for use in another application:

1. Create a path around the portion of the image that you want to keep.
2. Save the path, and keep it active.
3. Choose Clipping Path from the Paths palette command menu.
4. Choose the path name from the Path drop-down menu 1.
5. Enter a number in the Flatness field or leave this field blank to use the printer's default setting. Enter 8, 9, or 10 for high-resolution printing; enter 1, 2, or 3 for low resolution printing (300–600 dpi).
6. Click OK (Enter/Return).
7. Save the document in the Photoshop EPS file format (see page 297). When you open or import it into another application, only the area inside the clipping path will display and print 2–4.

TIP If you transform the silhouetted image in Adobe Illustrator, the area outside it will remain transparent.



4 If the image were to be imported without a clipping path, it would have an opaque white background.

Clipping Path