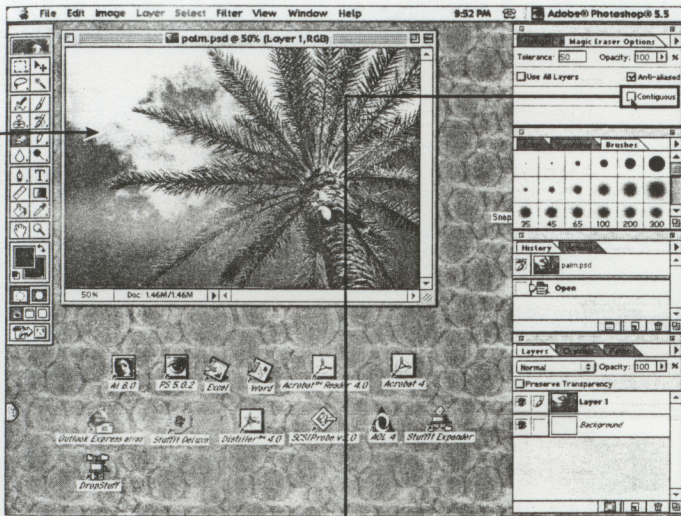


PHOTOSHOP 5.5

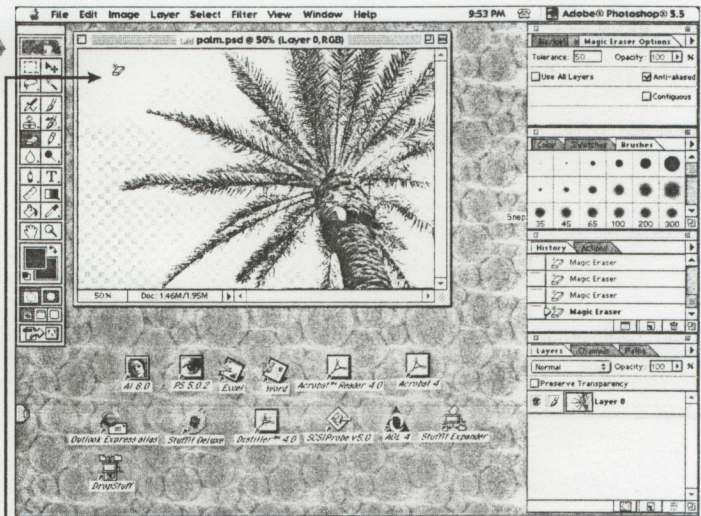
Magically Erasing the Background

CHAPTER 17

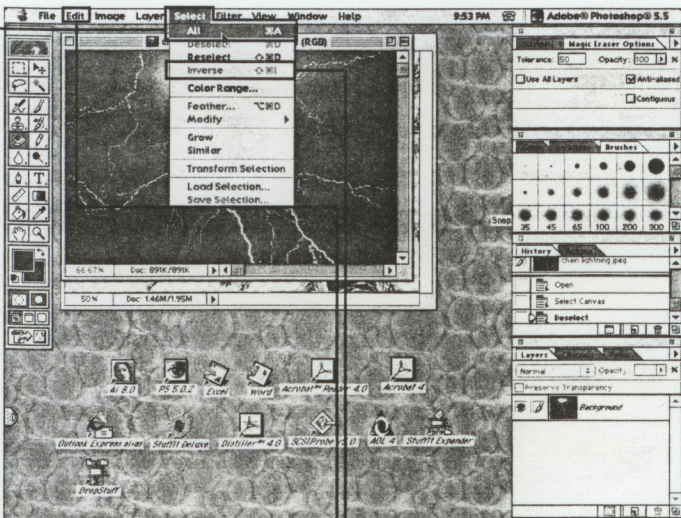


1 Open the image whose background you want to remove in Photoshop.

2 To access the Magic Eraser, click and hold on the Eraser tool to see the pop-up additional tools. Then drag over to the Magic Eraser tool.

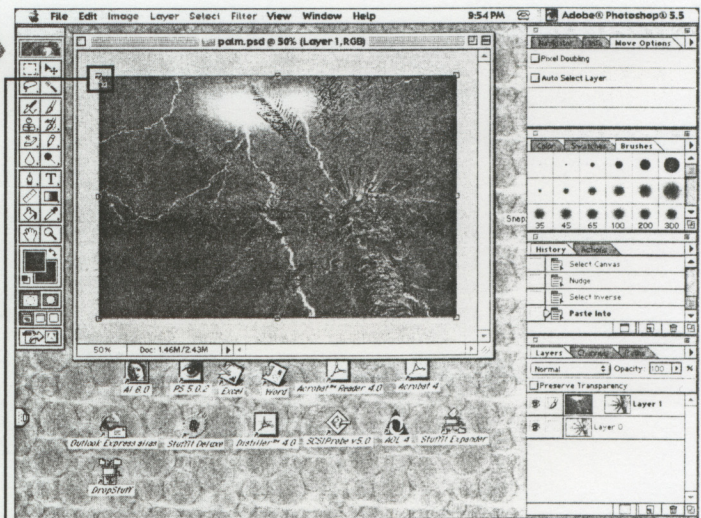


3 Click the blue part of the sky to remove it. Then click the white clouds to remove that color as well. You can see how wonderful this tool works around the palm fronds.



4 Choose another sky background for this image and copy it to the clipboard by selecting the whole image (Select ⇨ Select All), and copying (Edit ⇨ Copy).

5 On your original image choose Select ⇨ Select All, then Select ⇨ Inverse.
6 Choose Edit ⇨ Paste Into.



7 Choose Edit ⇨ Free Transform to move, rotate, or scale the pasted image.