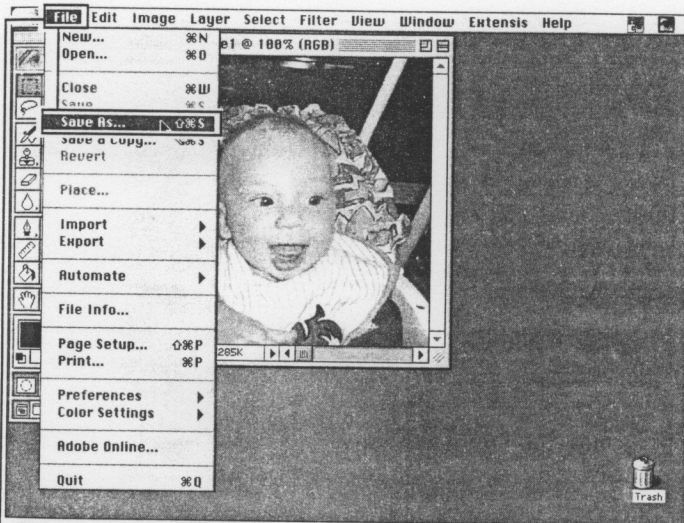
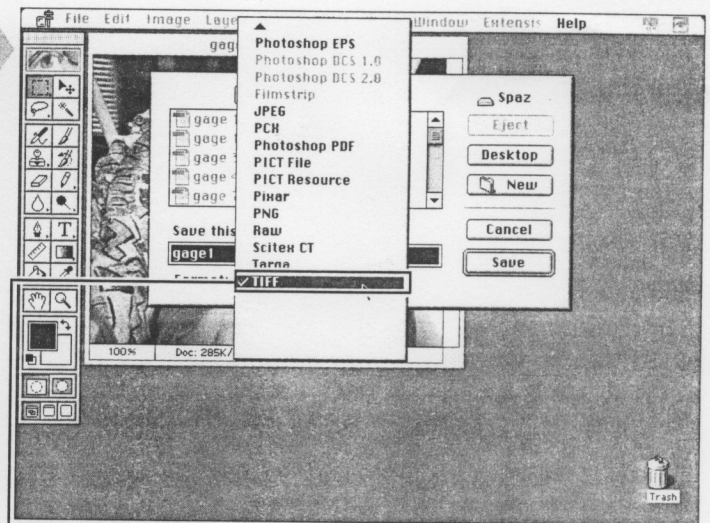


THE PHOTOSHOP ENVIRONMENT

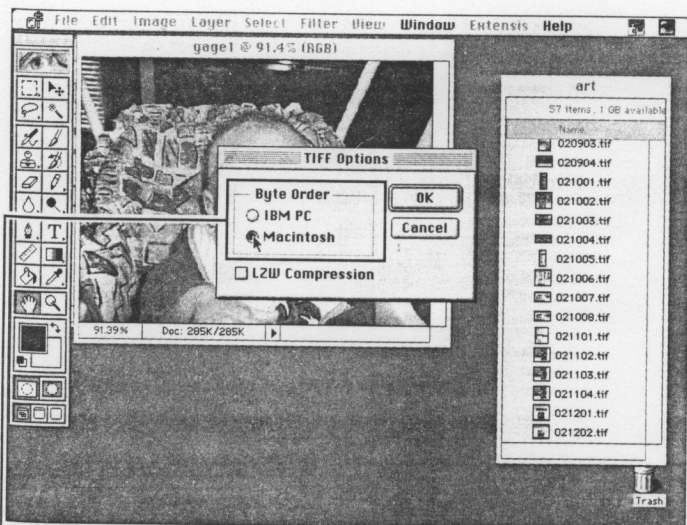
Saving Files in Formats Other Than Photoshop



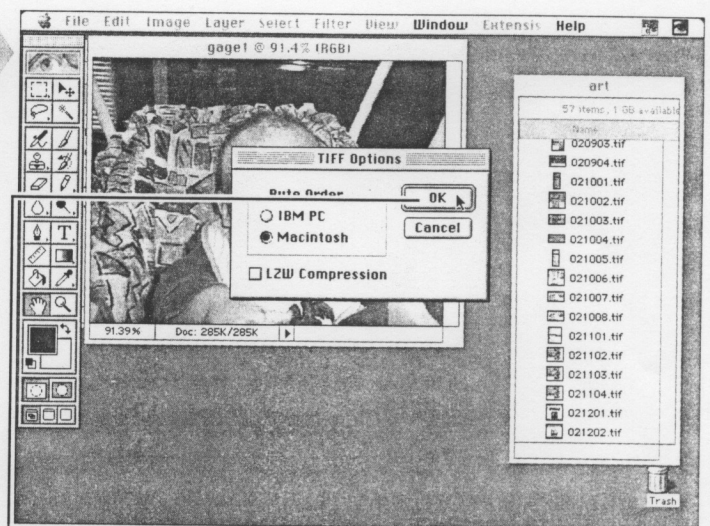
1 Choose Save As from the Edit menu.



2 Choose TIFF from the pop-up options.



3 Choose IBM PC or Macintosh depending on which platform your image will be viewed on. (Note: If you choose IBM PC, a Macintosh can still view it, but if you choose Mac, your Windows system can't view it.)



4 Click OK to save your image.